

# PS-5004V

4-Port HDMI Quad-Viewer & Seamless KVM Switch with  
USB 3.1 Gen 1 HUB & mouse roaming

User Manual

## TABLE OF CONTENTS

INTRODUCTION .....	1
FEATURES .....	1
PACKAGE CONTENTS.....	1
SPECIFICATIONS.....	2
PANEL DESCRIPTIONS .....	3
CONNECTION DIAGRAM .....	4
HOTKEY .....	5
NOTICE .....	6
WARRANTY .....	8



rev: 201110  
Made in Taiwan

## INTRODUCTION

The **PS-5004V 4-Port HDMI Quad-Viewer & Seamless KVM Switch with USB 3.1 Gen 1 HUB & mouse roaming** provides the most flexible and cost effective solution in the market for multiple computer management at home & office. The KVM switch can control 4 HDMI USB computers by one set of console peripherals (keyboard, mouse & monitor). With built-in USB 3.1 Gen 1 hub, users can share USB peripheral devices between connected computers. Besides, this KVM switch supports a variety of video layout (5 default modes), seamless switching on one view mode and mouse roaming function.

## FEATURES

- Input resolution supports 480i/480p/576i/576p/720p/1080i/1080p
- Output resolution supports 1080p@60
- HDCP 1.4 compliant
- Supports 3 Display Modes: One View Mode, Quad View Mode, Quad View Cycled Mode
- Supports seamless switching on one view mode
- Supports mouse roaming
- Supports separate line input and output
- Plug and Play without any driver needed
- Supports built-in 4-port USB3.1 Gen 1 HUB to share USB devices
- Supports independent HID keyboard & mouse ports
- Supports hotkeys
- Video bandwidth: 6.75Gbps
- Firmware upgradable for support of new features and technology enhancements
- The KVM can switch every input by push buttons

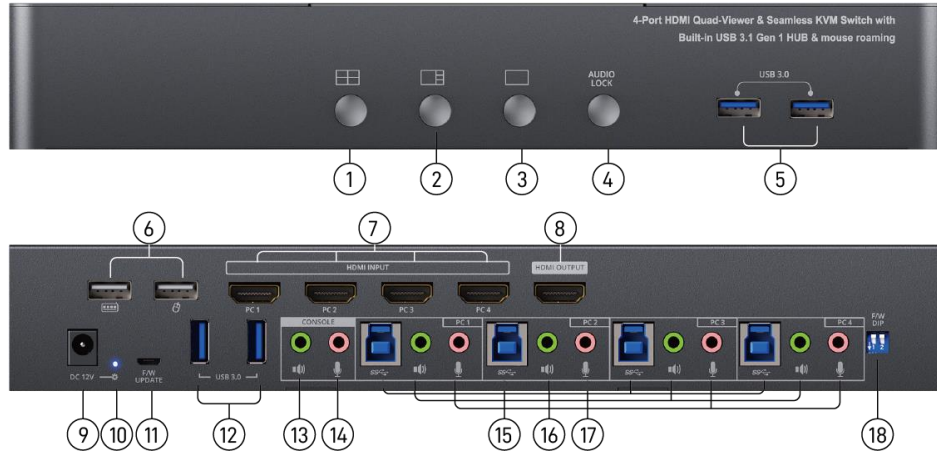
## PACKAGE CONTENTS

- 1x PS-5004V
- 1x DC 12V power supply
- 1x User Manual

## SPECIFICATIONS

Model Name		PS-5004V
<b>Technical</b>		
Role of usage		4-Port HDMI Quad-Viewer & Seamless KVM Switch
HDCP compliance		HDCP 1.4
Video bandwidth		HDMI [6.75Gbps]
Output Video Support		1080p60
Input Video Support		480i/480p/576i/576p/720p/1080i/1080p
Audio support		Bypass
ESD protection		Human body model — ±15kV [air-gap discharge] & ±8kV [contact discharge]
Input		4x HDMI/ 4x USB 3.1 Gen 1(type B)/ 5x 3.5mm phone jack
Output		1x HDMI/ 4x USB 3.1 Gen 1(type A)/ 2x USB 1.1(type A)/ 5x 3.5mm phone jack
HDMI connector		Type A [19-pin female]
USB connector		USB3.1 Gen 1 type A / type B
<b>Mechanical</b>		
Housing		Metal enclosure
Dimensions [L x W x H]	Model	282 x 112 x 37mm [11" x 4.4" x 1.5"]
	Package	331 x 162 x 204mm [1' x 6.4" x 8"]
	Carton	500 x 432 x 340mm [1'6" x 1'4" x 1'1"]
Weight	Model	930g [2 lbs]
	Package	2557g [5.6lbs]
Fixedness		1RU rack-mount with ears and Wall hanging holes
Power supply		12V DC
Power consumption		12 Watts [max]
Operation temperature		0~40°C [32~104°F]
Storage temperature		-20~60°C [-4~140°F]
Relative humidity		20~90% RH [no condensation]

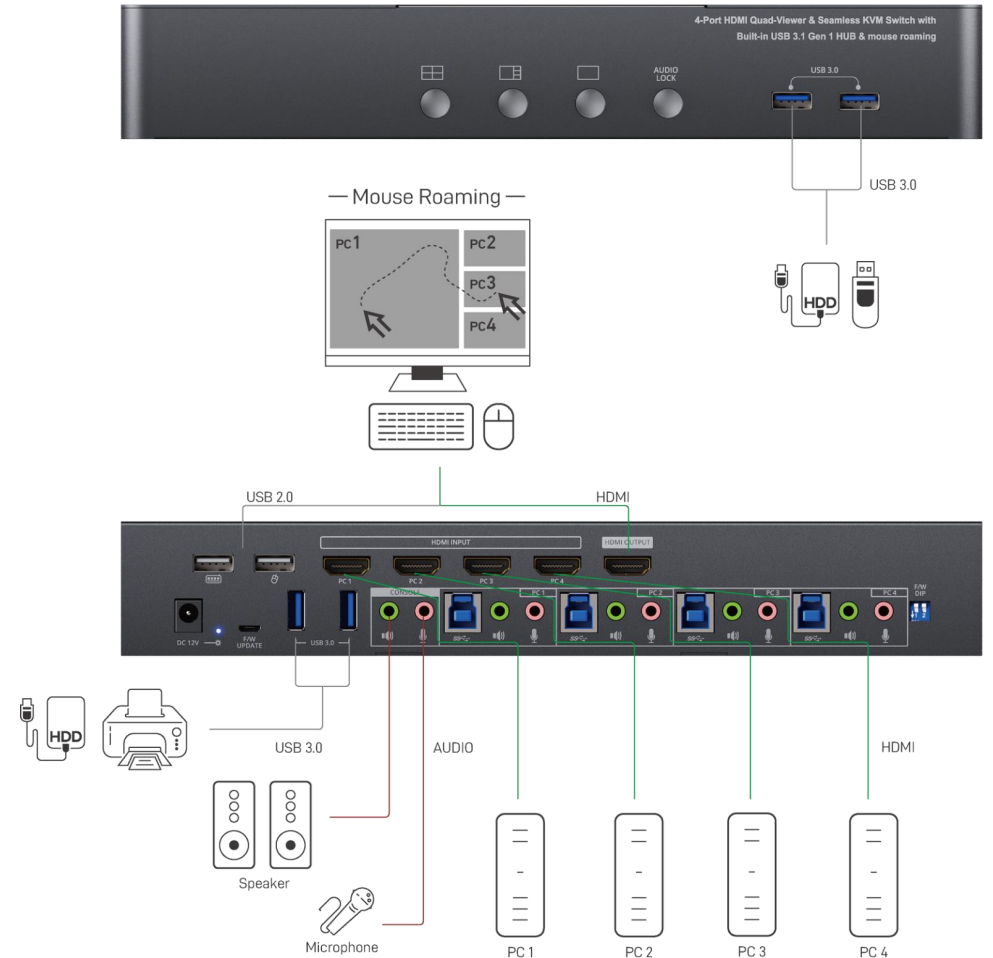
## PANEL DESCRIPTIONS



1. **Quad View mode 1:** Averaged Quad View
2. **Quad View mode 2:** 1 Main and 3 sub Quad View
3. **One View mode:** Switch source in one view (full screen) mode
4. **KVM Audio lock:** Lock the selected PC stereo audio in/out to console
5. **USB 3.1 Gen 1 Hub:** Connect to USB devices
6. **Console USB Ports:** Connect to keyboard & mouse
7. **KVM Video IN 1-4 (HDMI IN 1-4):** Connect the HDMI cable to PC
8. **Console Video OUT (HDMI OUT):** Connect the HDMI cable to a display
9. **+12V DC:** +12V DC power jack
10. **Power Status:** Power indicator LED
11. **Micro USB:** For F/W update
12. **USB 3.1 Gen 1 Hub:** Connect to USB devices
13. **Console Stereo Audio OUT:** Connect to analog stereo audio speaker
14. **Console Stereo Audio IN:** Connect to analog stereo audio source
15. **KVM USB 3.0 (Type B):** Connect the USB cable to PC
16. **KVM Stereo Audio IN 1-4:** Connect the stereo cable to PC
17. **KVM Stereo Audio OUT 1-4:** Connect the stereo cable to PC
18. **2-Pin Dip Switch:** For F/W update

DIP Switch Position				Description
2-Pin				
PIN#1	PIN#2	ON [↓]	OFF [↑]	KVM Firmware Update mode
		ON [↓]	ON [↓]	MCU Firmware Update mode
		OFF [↑]	OFF [↑]	Reserved
		OFF [↑]	ON [↓]	Working mode

## CONNECTION DIAGRAM



## HOTKEY

Default setting, all of the following commands begin by pressing the [Scroll Lock] or [Ctrl] key twice. Please follow the hotkey command listed below for selected operating functions:

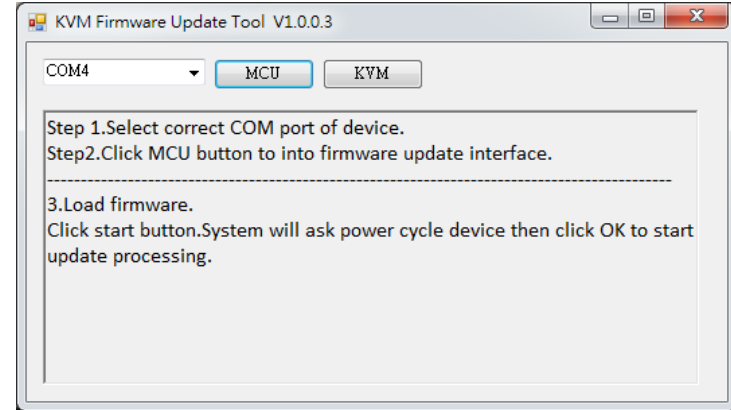
Hot key Definition	
[Scroll Lock] + [Scroll Lock] + [NUMBER1~4]	Switch input 1~4 source to output
[Scroll Lock] + [Scroll Lock] + [F1]	Quad view mode
[Scroll Lock] + [Scroll Lock] + [F2]	Quad view cycled mode
[Scroll Lock] + [Scroll Lock] + [A] + [Number 1~4]	Under quad view mode, select HDMI input 1~4 Audio to HDMI output
[Scroll Lock] + [Scroll Lock] + [L] + [A]	Audio Lock/ Audio Unlock
[Scroll Lock] + [Scroll Lock] + [L] + [U]	USB Lock/ USB Unlock
[Scroll Lock] + [Scroll Lock] + [O] + [F] + [F]	Turn off HOTKEY function
[Scroll Lock] + [Scroll Lock] + [O] + [N]	Turn on HOTKEY function

## NOTICE

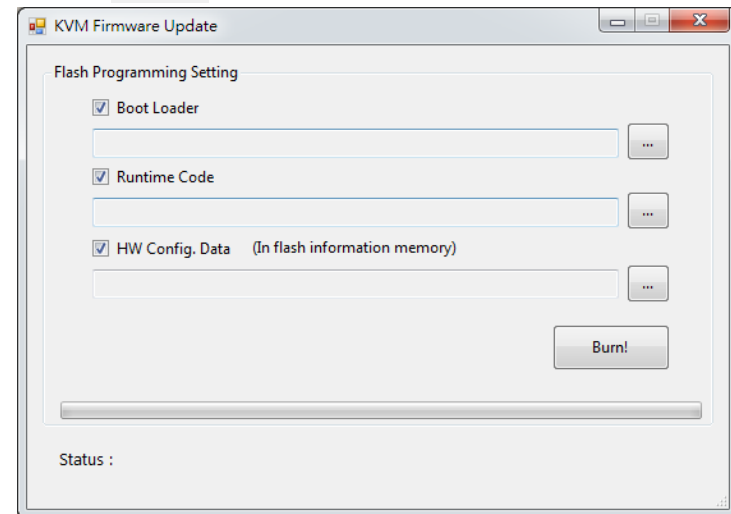
Firmware update is proceeded through Micro-USB

### 1. KVM F/W update

- Connect the Micro-USB to USB cable between PC and device
- Set dip switch [PIN#1,PIN#2] to [ON] [↓], OFF [↑] and then power on device
- Open firmware update software and then select COM Port



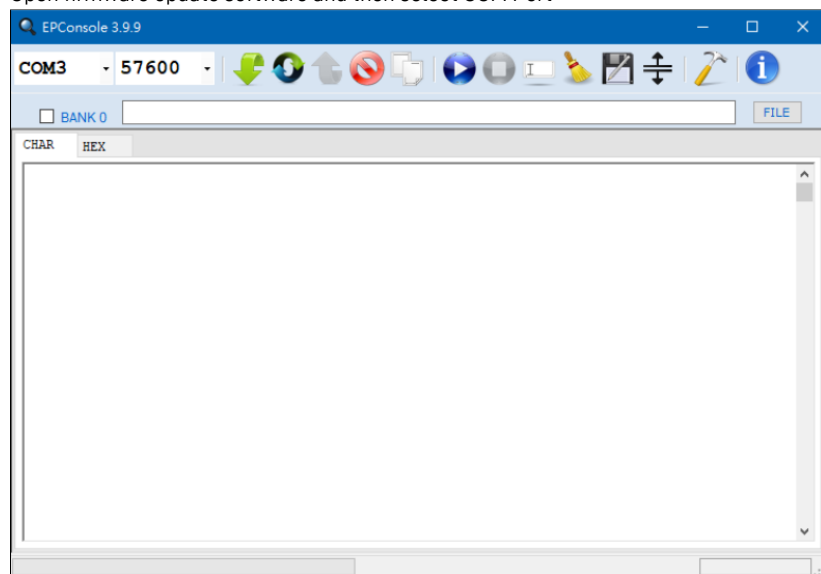
- Click  button to open "KVM Firmware Update" windows. Check all items and click each  button to select the file which you want to write into device. Click the  button to start firmware update





- After updating, please set the dip switch [PIN#1,PIN#2] to [OFF] [↑], [ON] [↓] and power cycle the device

## 2. MCU F/W update

- a) Connect the Micro-USB to USB cable between PC and device
- b) Set dip switch [Pin#1, PIN#2] to [ON[↓],ON[↓]] and then power on device
- c) Open firmware update software and then select COM Port



- d) Click  button to load firmware file.
- e) Click  button to start firmware update process.
- f) After updating, please set the dip switch [PIN#1,PIN#2] to [OFF [↑],ON[↓]]and power cycle the device

## WARRANTY

The SELLER warrants the **PS-5004V 4-Port HDMI Quad-Viewer & Seamless KVM Switch with USB 3.1 Gen 1 HUB & mouse roaming** free from defects in the material and workmanship for 1 year from the date of purchase from the SELLER or an authorized dealer. Should this product fail to be in good working order within 1 year warranty period, The SELLER, at its option, repair or replace the unit, provided that the unit has not been subjected to accident, disaster, abuse or any unauthorized modifications including static discharge and power surge. This warranty is offered by the SELLER for its BUYER with direct transaction only. This warranty is void if the warranty seal on the metal housing is broken.

Unit that fails under conditions other than those covered will be repaired at the current price of parts and labor in effect at the time of repair. Such repairs are warranted for 90 days from the day of reshipment to the BUYER. If the unit is delivered by mail, customers agree to insure the unit or assume the risk of loss or damage in transit. Under no circumstances will a unit be accepted without a return authorization number.

The warranty is in lieu of all other warranties expressed or implied, including without limitations, any other implied warranty or fitness or merchantability for any particular purpose, all of which are expressly disclaimed.

Proof of sale may be required in order to claim warranty. Customers outside Taiwan are responsible for shipping charges to and from the SELLER. Cables and power adapters are limited to a 30 day warranty and must be free from any markings, scratches, and neatly coiled.

The content of this manual has been carefully checked and is believed to be accurate. However, The SELLER assumes no responsibility for any inaccuracies that may be contained in this manual. The SELLER will NOT be liable for direct, indirect, incidental, special, or consequential damages resulting from any defect or omission in this manual, even if advised of the possibility of such damages. **Also, the technical information contained herein regarding the PS-5004V features and specifications is subject to change without further notice.**